



XINYUCOLOR SERIES

A HAIR COLOR FORMULATION TOOL
FOR YOU.....

Jiangsu Xinyu Bio-Tech Co., Ltd.
Dingshu Town, Yixing City, Jiangsu, 214225, China

www.xinyuchem.com

Are you tired and bored of matching colors with your permanent hair color formulas?

Do you have too many dye intermediates to handle?

Do you want to save time for more important projects?



XinyColor Series is your answer

Jiangxu Xinyu Bio-Tech Co. Ltd. has been a renown hair dye producer for 25 years. We supply oxidation dye intermediates and direct dyes to hair color manufacturers over the world. We understand the tedious and frustrating process of formulating permanent hair color, and we make it our resolution to simplify this time consuming process.So are the birth of the XinyColor Series.

XinyColor series:

Our ordinary 9 color series which consists of 4 base colors and 5 color modifiers.

4 XinyColor Base colors:



XinyColor Black



XinyColor Dark Brown



XinyColor Light Brown



XinyColor Blonde

5 XinyColor Modifier colors:



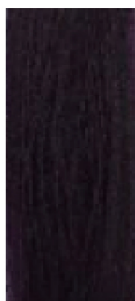
XinyColor Red



XinyColor Yellow



XinyColor Blue



XinyColor Violet



XinyColor Ash

Together with XinyWax, you can develop a wide range of colors by following the color theory.

Examples:

XinyColor chosen:
Color result on white hair:

Natural Blonde (0.25%)

neutral blonde

by increasing the amount of:
Color result on white hair:

Red → MORE

warm warmest reddish
blonde blonde blonde

XinyColor chosen:
Color result on white hair:

Light Brown (2%)

neutral lt.brown

by increasing the amount of:
Color result on white hair:

Yellow → MORE

lt. soft golden lt. golden deep golden
brown brown lt. brown

Do you know :

- XinyColor series takes away the guess work that you go through every time you need to create a new SKU on your permanent hair color line.
- Using different combination ratios, a wide range of colors selling in the market can be achieved ^{*}.
- Add a color modifier to your existing formula; this will provide the expected color modification with no extensive adjustment work on your current formula.
- Each XinyColor is specially packed to guarantee stability throughout its shelf life.

^{*} For certain special colors, you can rely on our dedicated R&D team.

Formulate with confidence:

	Ingredient name	%
Phase A	D.I. water	q.s.
	Propylene glycol	5.00
	Sodium isoascorbate	0.20
	EDTA.2Na	0.20
	Sodium sulfite	0.40
Phase B	XinyColor series dyes	q.s.
Phase C	XinyWax Oxy-CCW	20.0
Phase D	Ammonium hydroxide (27%)	6.00 – 10.00

Procedure:

- Combine Phase A and heat to 80 – 85°C with constant stirring.
- Maintaining temperature and agitation, add Phase B of predetermined quantity to the hot water phase. For better result, keep the batch under a blanket of nitrogen gas.
- When all solid particles are dissolved, divide XinyWax Oxy-CCW (Phase C) into convenient pieces and introduce them to the hot batch.
- Keep the mixing process at 80 – 85°C for another 15 – 20 minutes, then allow the temperature of the batch to decline.
- Transfer Phase D to the batch when temperature has reached <35°C.
- Continue to mix the content until uniform and tube.

Play a little color formulation game; take the following quiz:

1. It is common to dye hair with p-phenylenediamine and p-amino-o-cresol. The composition appears red; therefore, the hair is dyed red. True or False
2. Mixing 2 parts of 1-naphthol, 1 part of p-phenylenediamine, 1 part of 6-amino-m-cresol give a green color tone on hair as a result.. True or False
3. Mixing 1 part of Xinycolor Blue and Xinycolor Yellow, a green hue can be achieved on white hair. True or False
4. Mixture of orange, green, and violet can dye hair black. True or False
5. In products with no PPD label, usually 2,5-toluene diamine sulfate (TDS) is employed as substitute. True or False
6. In hair dyeing, reaction of dye intermediates determines the outcome of the color on hair. True or False
7. XinyColor Blue is a dark blue powder according to the name. True or False

Check below for answers to the quiz.

Answers to the quiz:

- 1.False. Such combination in a conventional formula containing ammonia is usually purplish.
- 2.False. The yellow tone from 6-amino-m-cresol and 1-naphthol will be overwhelmed by the purplish blue of p-phenylenediamine and 1-naphthol in this combination.
- 3.True. In spite of the answer to question 2, XinyColor makes the impossible possible.
- 4.True. Surely you have not been tricked, have you?
- 5.True. This is the most common practice of to date.
- 6.False. There are two important factors governing the color outcome on hair: the chemical reaction between intermediates and the diffusion of the intermediates inside the hair. XinyColor Series takes these factors into consideration during the design of the products.
- 7.False. All products in the XinyColor series should appear as off white to light colored powder. If the color appears to be dark, it only means the product is not properly stored or has passed its expiration date. appears to be dark, it only means the product is not properly stored or has passed its expiration date.

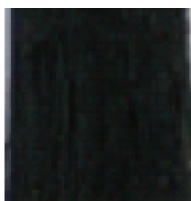
Congratulations. You have accepted this challenge and if you got all questions right, you are truly the master of hair color formulation. Don't feel bad if you got some wrong because we purposely word the questions in a little confusing manner, just for the fun.

Finally for your “no PPD” hair color lines, with p-phenylenediamine alternative to assist with your marketing concept, we offer another independent XinyColor series – the XinyColor TS series.

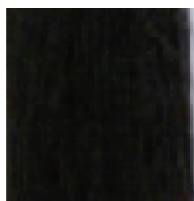
XinyColor TS series:

It is a 9-color series which consists of 4 base colors and 5 color modifiers, just like the XinyColor series.

4 Base colors:



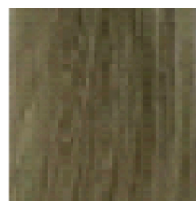
XinyColor TS-Black



XinyColor TS-Dark Brown

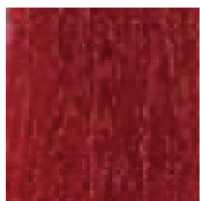


XinyColor TS-Light Brown



XinyColor TS-Blonde

5 XinyColor Modifier colors:



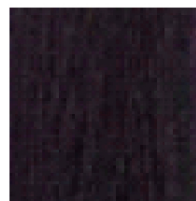
XinyColor TS-Red



XinyColor TS-Yellow



XinyColor TS-Blue



XinyColor TS-Violet



XinyColor TS-Ash

- It shares all the convenient features designed for the XinyColor series.
- The nine color palettes can be mixed to create a wide range of shades*.
- By using XinyColor TS series in your color formulation, you can make the “no PPD” claim on the product panel.

** For certain special colors, you can rely on our dedicated R&D team.*

Disclaimer – This information is presented by Jiangxu Xinyu Bio-Tech Co. in good faith. Xinyu believes that the information provided at this time is correct. However, as numerous factors can affect results, no warranty as to merchantability, result accuracy, fitness for certain particular uses, performance or safety is given, nor is freedom and any warranty from patent infringement to be inferred. Recommendations for use of the products are based on current knowledge. No guarantee is made by Xinyu regarding the validity of the recommendations or the results described in this booklet. We strongly suggest that users conduct proper tests to determine the product suitability for their own purpose prior to use.